

1

2

3

4

**GENERAL SPECIFICATIONS**

Material: UNS A96061 (6061-T6) Aluminum

Weight: 5.9 oz [166 g]

Pressure Rating: 6000 PSI

Temp Range: -50°F to +130°F [-45°C to +55°C]

Installation Torque: 60-65 ft-lbs (see Notes)

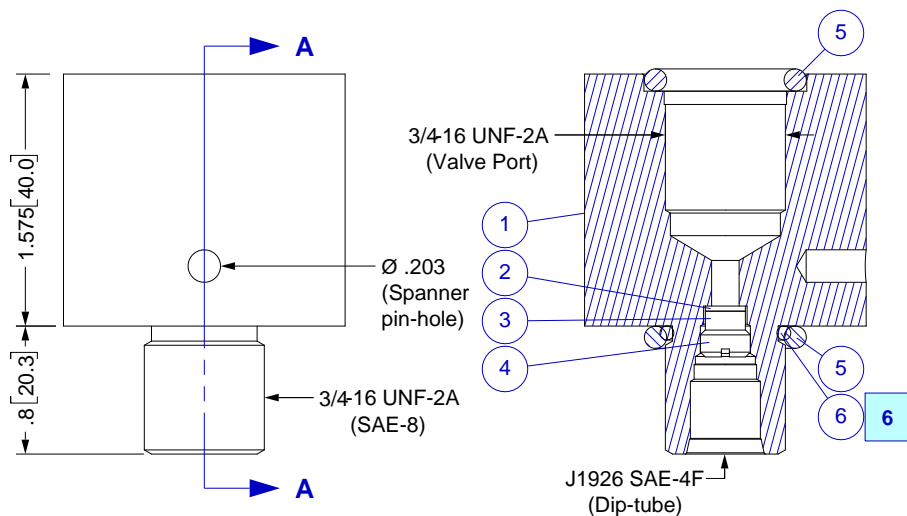
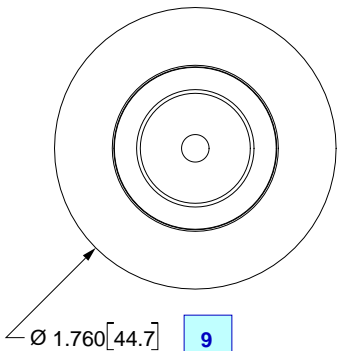
Spanner: McMaster-Carr p/n 55165A37 or equivalent.

*Cleaned for oxygen service per MH ESR-008D*

**Key**

1 Note

| REF | MH Part Number | Description    |
|-----|----------------|----------------|
| 1   | 00CYL-0036-00  | Body           |
| 2   | 09025-0003-00  | Filter         |
| 3   | 09054-M403-05  | Spacer         |
| 4   | 0RG10-0202-00  | Set-screw      |
| 5   | 09001-0210-90  | O-ring         |
| 6   | 09001-3908-70  | O-ring (SAE-8) |



| REV | ECO      | Release    | Drawn | REVISION HISTORY |
|-----|----------|------------|-------|------------------|
| A1  | 2019-040 | 2019-08-22 | SGO   | Customer Drawing |

**WARNINGS**

This Union/Extender **does not** have a **pressure relief device (PRD)**. It is completely incumbent upon the user to ensure that the system incorporates a PRD (typically in the valve) that is properly rated for the cylinder used.

Improper installation of this Union/Extender can result in **severe damage, serious injury or death!**

**Recommended Installation**

This Union/Extender will be installed together with the Cylinder and Valve of your choice when you place your order with Mountain High E&S Co. If retro-fitting an existing Cylinder/Valve assembly, MH recommends sending your Cylinder/Valve assembly in for service. Contact MH Customer Service for more information.

**Field Installation and Service**

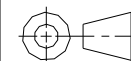
1. Installation should only be performed by authorized, trained service personnel.
2. Spare/replacement parts may be ordered from Mountain High E&S Co. Refer to the MH part numbers listed.
3. Union/Extender installs between Cylinder and Valve.
4. Optional Dip-tube is available - contact MH Customer Service.
5. O-rings provided are pre-lubed.
- 6] Use "908" size O-ring provided if installing into SAE-8 Cylinder port.
7. Torque Valve into Extender/Cylinder as one. It is not necessary to torque Extender separately.
8. Spanner may be used for disassembly. O-rings must be replaced when re-assembling.
- 9] Body may be turned-down to Ø1.150 MIN as required, but then must be thoroughly re-cleaned for oxygen service.

UNLESS OTHERWISE SPECIFIED, DIMENSIONS ARE IN INCHES. TOLERANCES ARE:

0.X ±0.015 ANGLES ±3°  
0.XX ±0.010 FRACTIONS ±1/64  
0.XXX ±0.005

INTERPRET GD&T PER ASME 14.5

THIRD ANGLE PROJECTION



DO NOT SCALE DRAWING

DRAWN SGO  
2019-05-10

CHECKED SB  
2019-05-15

ENGINEER PLM  
2019-05-14

APPROVED HBS  
2019-05-15

**MH MOUNTAIN HIGH E&S CO.  
REDMOND, OR. USA**

THIS DOCUMENT AND ALL TECHNICAL DATA HEREON DISCLOSED ARE PROPERTY OF MOUNTAIN HIGH E&S CO. AND SHALL NOT BE USED, RELEASED OR DISCLOSED IN WHOLE OR PART WITHOUT WRITTEN PERMISSION FROM MOUNTAIN HIGH E&S CO. THIS DOCUMENT MUST BE RETURNED TO MOUNTAIN HIGH E&S CO. IMMEDIATELY UPON REQUEST.

DWG TITLE  
**Cylinder Neck Union/Extender Assembly,  
3/4-16 Port [SCD]**

DWG NUMBER  
**5SCYL-0036-01** DWG REV. **A1**

CAD FILE 00CYL-0036-01\$A1 INV. PART NUMBER 00CYL-0036-01 PROD. NAME

DWG FORMAT: ESR-002 Rev H [20] DWG SCALE DWG SHEET 1 OF 1 DWG SIZE A 11x8½

Insert #: 5ICYL-0036-01