

---

# Naviter Oudie Tips



Paul Remde

[www.cumulus-soaring.com](http://www.cumulus-soaring.com)

[paul@remde.us](mailto:paul@remde.us)

September 1, 2011

---

## ***Preliminary – Not complete or corrected yet***

The Naviter Oudie is a great soaring tool. It combines great PNA hardware with the popular and powerful SeeYou Mobile soaring flight software. The marriage of the hardware and software is more than just installing the software on a PNA. There are many ways in which the unit is customized for use by soaring pilots – making it the perfect solution for both new and experienced soaring pilots.

This document includes some tips to help you get the most out of your Oudie. I have tried to make it as complete as possible. Please consider it to be in addition to the SeeYou Mobile Manual and the SeeYou Mobile Tips document. Links to both of those documents are available below.

I suppose that all the tips found here can be a bit intimidating. Please keep in mind that this will all become clear over time – as you gain more experience with SeeYou Mobile and the Oudie. There is a “Quick Start” section below to get you up and running quickly.

### **Documents and Help Resources**

This and related documents are available at:

<http://www.cumulus-soaring.com/seeyou.htm#Downloads>

### **Oudie Manual – Full**

A full Oudie manual is available on the Naviter web site under “Downloads > Help files” at :

<http://www.naviter.si/download/oudie/index.php?Itemid=27>

### **Oudie Manual - Short**

The small manual in the link below is included in the box with the Oudie. Please read it. Note that it incorrectly mentions that a CD-ROM is included in the box with the Oudie. No CD is included.

[http://www.cumulus-soaring.com/seeyou/User\\_Manual\\_Oudie.pdf](http://www.cumulus-soaring.com/seeyou/User_Manual_Oudie.pdf)

### **SeeYou Mobile Tips**

For more tips on using SeeYou Mobile, see the SeeYou Mobile Tips document available using the link below.

<http://www.cumulus-soaring.com/seeyou/SeeYou-Mobile-Tips.pdf>

### **SeeYou Tips and Manuals**

SeeYou for the PC is powerful software for your PC which is used to view flight logs in 2D and

3D, editing waypoints and tasks, and exporting waypoint and airspace data using the Mobile Wizard for use in SeeYou Mobile on a PDA or PNA.

SeeYou Tips: <http://www.cumulus-soaring.com/seeyou/SeeYou-Tips.pdf>

SeeYou Training Videos: <http://www.cumulus-soaring.com/training.htm#Training-SeeYou>

SeeYou Training Videos Script: <http://www.cumulus-soaring.com/seeyou/SeeYou-Training-Video-Script.pdf>

SeeYou Manual: <http://www.naviter.si/download/help-files/index.php?Itemid=27>

---

## Quick Start

This section is designed to get your Oudie up and running quickly. It includes only the basics. More detailed (very useful) information is found below this section. I highly recommend that you read this entire document.

## The Oudie's Power Button

The Oudie's power button is located on the left side of the unit, near the bottom. Since the unit can be used in several orientations, let me clarify which side is the left side. The Naviter logo is on the right side (front) of the unit and the power indicator light is on the bottom front of the unit. In addition, the miniUSB connector is on the bottom of the unit and so is the microSD card slot.

### To turn the Oudie On:

- Press and hold the power button on the left side of the unit until the screen lights up.

## Running SeeYou Mobile

Depending on the setting of the "Autorun" feature, the SeeYou software may run automatically at startup. More information on the Autorun feature is found below. If SeeYou Mobile does not start automatically, press the SeeYou Mobile icon and SeeYou Mobile will run.

If "Profiles" have been setup on the unit (a profile is a file containing user settings - more on Profiles below) select the desired profile and then press the "Select" button. If you do not make a selection it will select the highlighted profile and start after about 10 seconds.

## Turning Off the Oudie

- Exit SeeYou Mobile by pressing Menu > Next > Exit
- Press "Yes" to confirm exiting and saving your settings.
- When back to the screen where you see the SeeYou Mobile and ConnectMe icons, Press and hold the power button on the left side of the Oudie until the "Do you want to power off?" window appears.
- To power down for a short time (a few minutes or hours), select the "Sleep" button. To power off for an extended period of time (days or weeks) press the "Power Off" button.

---

## Pre-installed Maps, Airports and Airspace

The Oudie is delivered with SeeYou Mobile and vector maps (topographical data, ground elevation data, cities, rivers, lakes, roads, etc.) preinstalled. Airport and Airspace files for much of the world are also pre-installed. Below is a list of the included files.

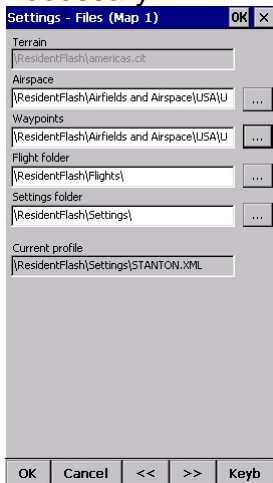
- Africa
- Alps
- Australia

- BeNeLux
- The Czech Republic, Slovakia, and Poland
- France
- Germany
- Hungary
- New Zealand
- Scandinavia
- Spain
- UK
- USA (divided into files for "USA West", "USA Central" and "USA East")

## Selecting Airport and Airspace Files

To select the desired airport and airspace files in SeeYou Mobile:


- In SeeYou Mobile: Go to Menu > Settings > Next > Next > Files.
- Click on the “...” buttons on the right side of the screen and select the desired waypoint or airspace file from the list. You can select only 1 airspace file at a time, but checkboxes are used to select waypoint files – so multiple waypoint files can be selected at a time – if necessary.



## Waiting for the GPS to Lock Onto Satellites


The first time you power up the Oudie in your area it will take a few minutes for it to lock onto satellites. If possible, take the unit outside and wait until the GPS NavBox indicates that the GPS has a 3D lock on satellites. The Oudie may not show maps or other information until it has acquired a good lock on satellites.

## Navigating to an Airport

To start navigating to an airport, press the “Direct To” button  which is found on the bottom of the screen. It will pull up a list of all the waypoints in current waypoint file. You can sort the list alphabetically by waypoint name, or by distance from your current location, or by arrival altitude, or Required L/D or waypoint type, or waypoint “Code”. To sort by distance click on the column header in the “Dis” column. Clicking the column header multiple times toggles between sorting in ascending or descending order. You can also move the column headers to the left or right of other columns by simply touching them and dragging them to a new location. Note that

there is a slider near the bottom of the screen which can be used to access columns that are outside the viewable area. I usually move the “Arrival” column to the left of the Distance column so I can see it without scrolling. The Arrival column is useful (in my opinion) because on a windy day, you may be able to arrive higher at a downwind or crosswind airport than you could arrive at an airport that is closer, but upwind. The airports that are highlighted in green are within gliding distance.

To start navigating to a waypoint:


- Press the “Direct To” button  at the bottom of the screen.
- Select the desired waypoint with your finger so it is highlighted in blue
- Click the “Goto” button at the bottom of the screen.



## Using the “Filter” Screen

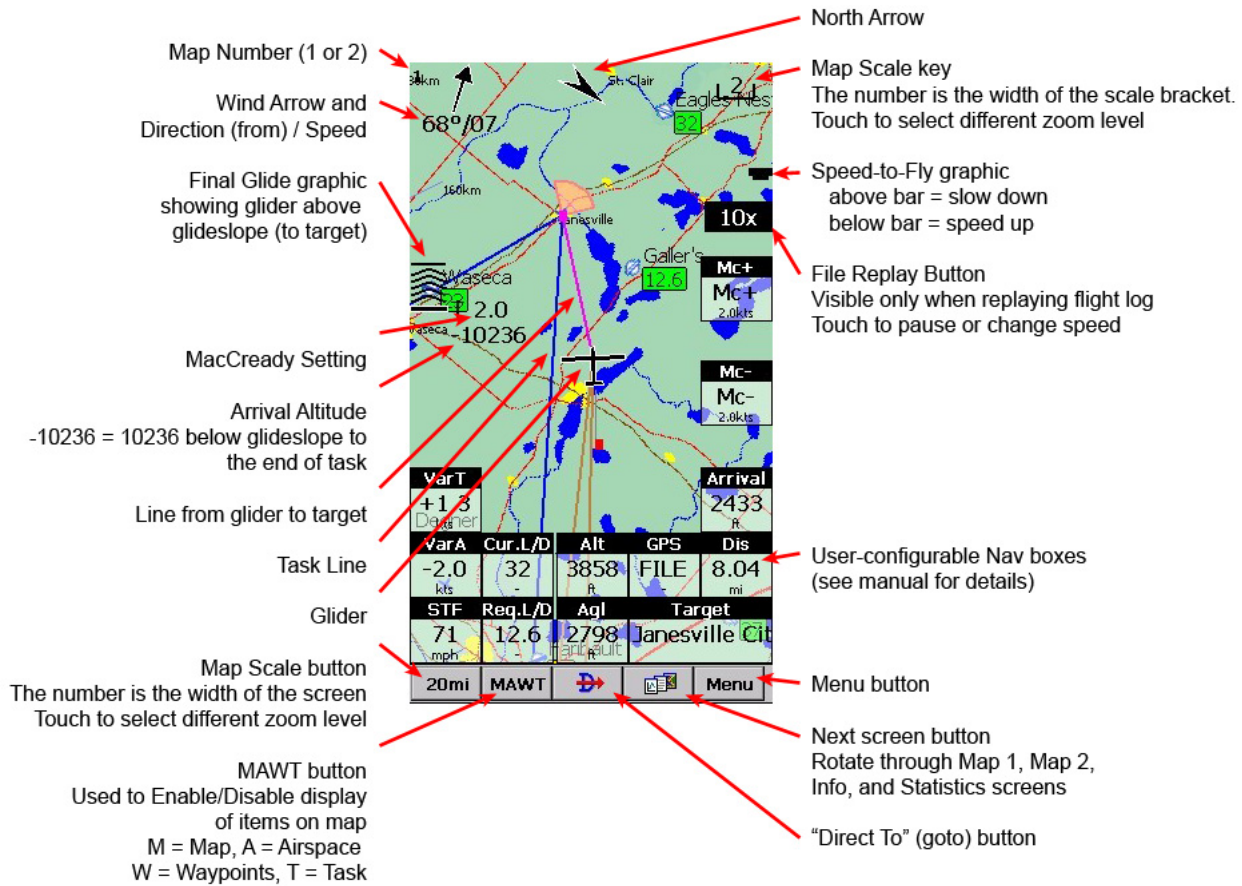
To quickly find any waypoint in the database, press the “Filter” button at the bottom right corner of the Go to screen. The “Filter” screen is very powerful because it allows you to very quickly access any airport in the database. When the Filter window appears, just use the keyboard to start entering the name of the desired airport. After a few key presses, it will show a short list of airports that start with the characters you entered. Touch the desired waypoint and hit the “Goto” button at the bottom of the screen.

To start navigating to a waypoint using the Filter screen:

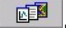
- Press the “Direct To” button  at the bottom of the map screen.
- Press the “Filter” button at the bottom right corner of the screen.
- Start typing the name of the desired waypoint using the keyboard. After a few characters are entered, a short list of waypoints that match the entered characters will be displayed.
- Select the desired waypoint by touching it.
- Press the Goto button at the bottom left corner of the screen.

## Map Overview

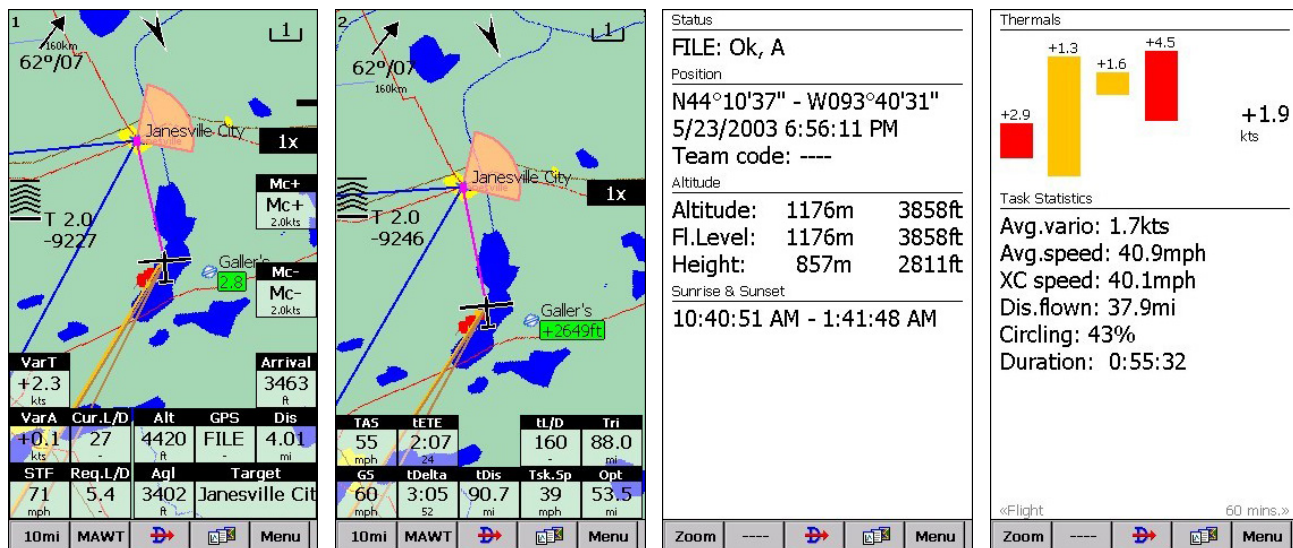
Below is an overview of the data displayed on the map screen in SeeYou Mobile. Note that the data displayed on the screen is highly customizable, so you can make the screen look exactly as you desire.



## The 4 Main Flying Screens

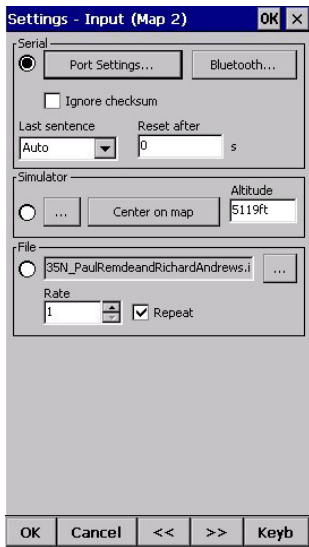
There are 4 main flying screens in SeeYou Mobile. To rotate through the screens, press the Next Screen button .

- Map 1
- Map 2
- Info (Status, Position, Altitude, Sunrise & Sunset times)
- Statistics (Thermal history, Statistics for Task, Flight and last 60 minutes)



## Selecting a Source for Flight Data

The Oudie can receive flight data from any of 5 sources. To select the desired input source, go to: Menu > Settings > Next > Next > Input screen.



## Flight Data Input Options

- **Serial**

Serial input is GPS and flight data from the unit's internal GPS or an external GPS or flight computer or flight recorder. Select the "Serial" radio button near the top, left corner of the screen to select serial input.

Next use the "Port Settings..." button to select the desired serial input communications port.

  - COM 1 (Internal GPS – use when not connected to any other GPS source)
  - COM 4 (RS-232 serial cable connected to GPS or soaring flight computer or flight recorder)
  - COM 5 (BlueTooth GPS)
  - KBT5 (K6 BT BlueTooth module)
- **Simulator**

Click on the glider and drag in the direction you want it to fly. Great for flying a task in advance while on the ground. Click the "..." button to select the airport to start from and use the "Keyb" (keyboard) button to enter an altitude that is well above the airport elevation. The Simulator is a great way to learn how to use SeeYou Mobile.
- **File**

The "File" input is used to select and replay a flight log file. Just copy a flight log from a recent flight in your area into the Oudie memory or onto a microSD card and then select the file in this screen. Replaying a flight log file is the best way to learn how to use SeeYou Mobile because you can relive a previous flight while seeing the Nav Boxes update as you fly.

---

## USB Connection to PC

The Oudie can be connected to a PC using a standard USB cable. It looks like a USB Flash Drive to the PC. To connect:

- Quit SeeYou Mobile
- Connect it to your PC using the supplied USB cable

- Click on the icon that looks like a USB Flash Drive – The Oudie will now act like a USB Flash Drive or remote hard drive to your computer. You can access the files on the Oudie using the Windows Explorer (My Computer) program.
- 

### **Software Upgrades**

There have been some minor software fixes and upgrades completed after the Oudies started shipping. I highly recommend upgrading your Oudie every now and then. You can download the upgrade on the Naviter web site in the “Download > Oudie Firmware” section.

<http://www.naviter.si/download/oudie-firmware/index.php?Itemid=27>

---

### **Profiles**

Profiles can be created in SeeYou Mobile for storing your favorite SeeYou Mobile settings. They can be used to store different setups for different soaring sites, or different gliders at a given soaring site, etc. All your current settings (including waypoint and airspace file selection and glider selection, etc.) can be saved to a profile. You can then select the desired profile when SeeYou Mobile starts.

### **Quick-Start Profiles**

Both Naviter and I have created a few profiles for the Oudie which have my favorite settings for NavBoxes, etc. and the U.S. airport and airspace files already selected. They are available here:

<http://www.cumulus-soaring.com/seeyou/Downloads>

Save the files to your computer and copy them into the “Settings” folder in the Oudie’s internal memory – or save them directly to the “Settings” folder in the Oudie. You can then select the desired profile when SeeYou Mobile starts.

---

### **Charge the Oudie’s Battery**

The great news is that the Oudie stores all programs, maps, airport data, airspace data (all information) in non-volatile memory – so you won’t lose anything if you let the battery in the Oudie run down. However, I still recommend keeping your Oudie charged at all times. There are several reasons. First, it is nice to be able to “play with” the Oudie with it not connected to a charger. Also, the Oudie can demand a large amount of current when charging its battery. The Cambridge 302 and Goddard PS-5a can provide plenty of power to run the Oudie itself – when the battery is full or nearly fully charged. But if the Oudie’s battery is more than half empty, the Oudie will draw more current than any current soaring instrument can provide. Therefore, either keep it on a charger at all times, or charge it for a while before connecting it to your glider’s power system.

---

### **Mobile Wizard**

It is also easy to generate airport and airspace files for your area and transfer them directly to the Oudie’s internal memory using the Mobile Wizard in SeeYou on the PC. The Mobile Wizard is shown in my SeeYou Training video number 46 here:

<http://www.cumulus-soaring.com/training.htm#Training-SeeYou>

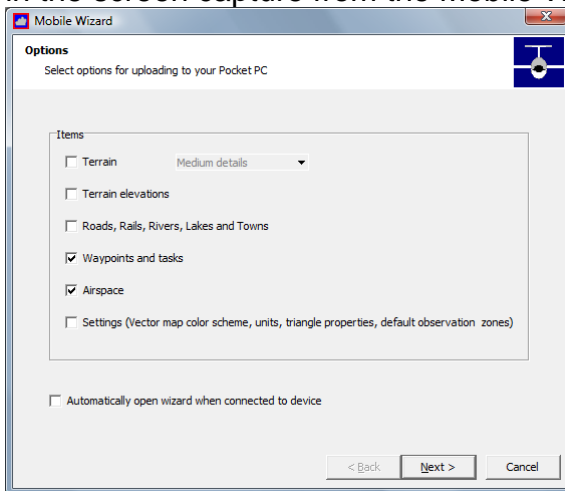
Getting current airport and airspace data into SeeYou is explained in the SeeYou Tips document at: <http://www.cumulus-soaring.com/seeyou/SeeYou-Tips.pdf>

## Before transferring the waypoint and airspace files to the Oudie:

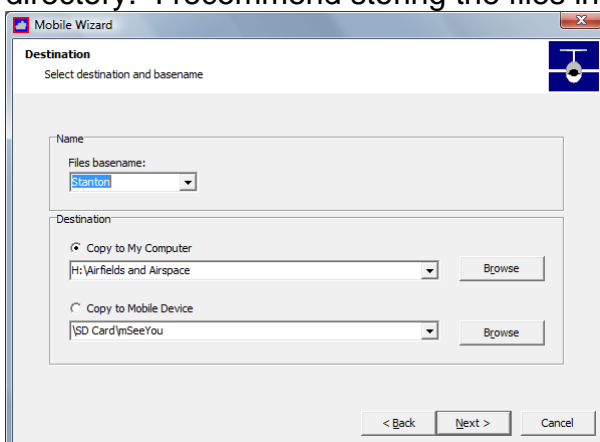
- Quit SeeYou Mobile on the Oudie.
- Connect the Oudie to the PC using the supplied USB cable.
- Click on the icon that looks like a USB Flash Drive – The Oudie will now act like a USB Flash Drive or remote hard drive to your computer.

## Using the Mobile Wizard

- To run the Mobile Wizard, in SeeYou for the PC go to the File menu and select “Mobile Wizard”.
- Since the Oudie already has vector maps for the world pre-installed, you don’t need to transfer “Terrain”, “Terrain Elevations” or “Roads, Rails, Rivers, Lakes and Towns” data to the Oudie. You only need to send “Waypoints and Tasks” and “Airspace” – as shown in the screen capture from the Mobile Wizard below.

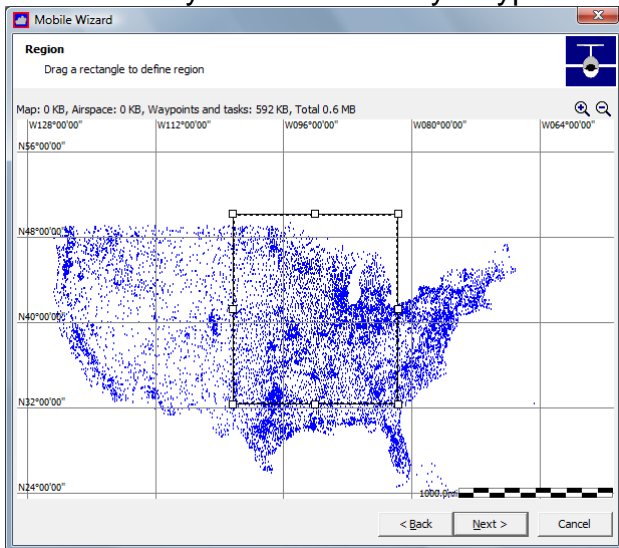


- Press the “Next” button.
- Enter the “Files basename”. That is the name that will be used as the root of the airspace and waypoint files generated by the Mobile Wizard. I recommend entering the name of the home airport of the soaring site.
- Select the “Copy to My Computer” radio button. It may seem strange that you don’t select the “Copy to Mobile Device” radio button, but in this case the Oudie looks like an external hard drive on your PC.
- Press the “Browse” button and select the directory on the Oudie into which you want to store the new waypoint and airspace files. The Oudie will probably be called the “TFAT” directory. I recommend storing the files in the “Airfields and Airspace” directory.



- Press the “Next” button.

- You will see a map window. I recommend dragging the edges of the map window to make it fill your entire computer screen. That allows you to see more detail.
- You can pan the map to the left or right or up or down by placing your mouse near the edge of the map and clicking. Note that when doing this in SeeYou your cursor turns to an arrow when near the edge of the map, but it does not turn to an arrow in the Mobile Wizard map window. You need to know that clicking near the edge of the map window allows panning the map.
- You can zoom in or out using the magnifying glass tools in the top-right corner of the window.
- Select the region you want to export by clicking and dragging a rectangular area on the map. After you finish selecting the region you can re-size it by clicking and dragging on any of the small white boxes along the edges and corners of the selection box.
- Note: You can select a very large area – 1/3 the USA is OK and common. It is OK to select an area containing thousands of waypoints. Large areas make long downwind-dash and ridge and wave flights possible. You may be concerned that it will be tough to find a particular airport from a list of thousands, but the “Filter” button in SeeYou Mobile makes it easy to zero in on any waypoint in a few button presses.



- Press the “Next” button
- Press the “Finished” button

### Oudie Serial Cable

Wiring details for the Oudie serial cable are included near the front of the Oudie manual. I have added details for configuring the RJ45 to DB-9 adapters for use with several soaring flight computers on my Naviter web page.

### Changing the map font sizes

I find the default font sizes to be too small for my eyes. For the Oudie, I recommend the changing the font sizes to the sizes listed below. To change the fonts for each map (map 1 and map 2 must be set independently), go to Menu > Settings > Next > Next > Fonts.

- Waypoint Font: 11
- Map Symbols Font: 12

## **Using a microSD card with the Oudie**

How to have it save flight logs (generated by Mobile) to the microSD card – using the Menu > Settings > Files screen.

---

## **Disabling the annoying beeps when the screen is touched**

---

## **Enabling and Disabling the Autorun feature**

---

## **Creating a polar for your glider**

SeeYou Mobile has dozens of glider polars pre-installed. However, polars are not available for every glider type. To create a polar for your glider:

- In SeeYou on the PC, go to the Tools > Polars screen and enter 3 airspeeds and sink rates for your glider. Note: You can enter the units with each number you enter. SeeYou will display 3 coefficients that represent the polar for your glider.
- Enter the 3 coefficients into SeeYou Mobile on the PDA or Oudie in the Menu > Settings > Polars screen.

Please let me know if you have any other tips or setup procedure items that I should add to this document.

Good Soaring,

Paul Remde  
Cumulus Soaring, Inc.  
[www.cumulus-soaring.com](http://www.cumulus-soaring.com)  
[paul@remde.us](mailto:paul@remde.us)