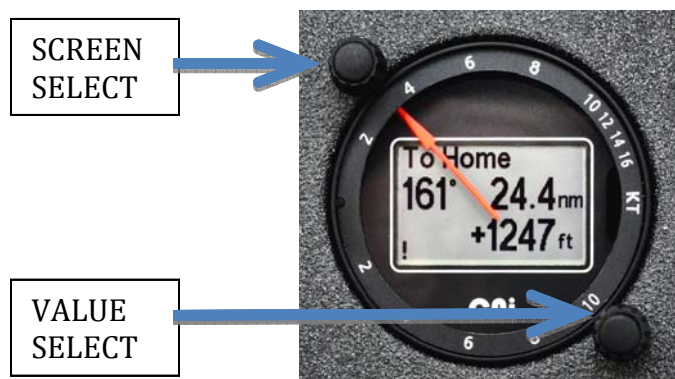


Controls



The top left (TL) knob selects the screen, the lower right (LR) selects the value of the parameter associated with the screen (for example MC, altimeter setting, time constant etc). If no adjustable parameter is present, the screen options are displayed. Some screens (including the illustration) are read-only and have no adjustable values.

The LR knob always defaults to the volume control until reassigned by using the TL knob.

The first CW click of the TL knob selects the MacCready setting screen:

MC 3.0_{KT}
STF 100_{KT}

The STF (Speed-to-Fly) number changes with the MC value and is the STF in neutral air taking into account the polar, ballast, bug settings – it is your target cruise speed when neither in lift nor sink.

Rotating the TL knob far enough CCW always selects either the cruise screen or the climb screen. It is not possible to overshoot the C/C screen.

Each CW click of the TL knob displays a new self-explanatory screen

With a single exception, pushing the buttons has no effect other than making a satisfying click. When the LR button is pushed on the meter zero adjust screen it commands the pointer to move to its extreme positions and back to zero.

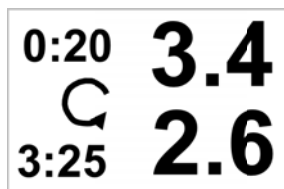
Cruise/Climb Toggle Switch

Until we implement automatic cruise/climb switching it is necessary to use this switch. In cruise it sets the climb screen and zeroes both timers and both averagers, in climb it sets the cruise screen and zeroes the 20 second netto average.

We suggest that you experiment with selecting the climb screen (and therefor zeroing the 20 second average) whenever making an exploratory circle – the averager value after one second is the one second average value, after two seconds the two second average etc until at 20 seconds it is just a moving 20 second average. The average after 8- 10 seconds (typical for a half circle) can be extremely useful in deciding whether or not to stay with the thermal.

Screens

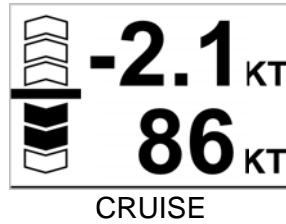
There are numerous screens which may be displayed, but the two most often in use are the climb and cruise screens:



CLIMB

The top line shows the 20 second moving average, the bottom line the average climb from starting to circle 3 minutes 25 sec ago. The lower number is the true measure of your climb performance in the current thermal and will generally be less than the 20

second average because it includes time spent in getting established in the climb.



The top line is the 20 second moving average of netto, the bottom line the STF, and the chevrons are speed commands.

ClearNav Instruments, 2012-04-10